



KINO CONTAINER SPREADER

Elevating Efficiency in Container Logistics

Catalogue

- Preface
- Industry Overview
- Company Introduction
- Types of Container Spreaders
- Overview of Standard Spreader
- Models and Specifications
- Container Spreader Spare Parts
- FAQ
- Customer Inquiry



Today, more than 3,000 KINO Spreaders are operational worldwide, attached to lift trucks, reach stackers, straddle carriers, and cranes, playing a pivotal role in ports and freight terminals across the globe. Our products are more than mere tools; they are partners in elevating logistics efficiency and business growth.

This booklet outlines the philosophy behind our operations and products. You will discover more about who we are at KINO Spreaders: what we offer, how we operate, and how we can assist you in streamlining your container handling processes and maximizing your profits.

Welcome to KINO Spreaders — your trusted partner in container handling solutions.

The Significance and Scope of Container Spreaders

- ★ Container spreaders are the unsung heroes of global commerce, serving as the critical link between giant shipping containers and the cranes that move them. These devices allow for the swift, secure, and efficient handling of containers, which are the building blocks of international trade. The application of spreaders extends beyond the ports; they are vital in intermodal terminals, freight stations, and anywhere containers are transported, stacked, or stored.

Historical Development of the Industry

- ★ The journey of container spreaders parallels the story of containerization—a revolution that began in the mid-20th century and reshaped global trade. The first spreaders were rudimentary and manual, but as container shipping grew, so did the technology. The industry has witnessed a progression from basic models to sophisticated systems capable of automated and semi-automated operations. Each innovation has brought about enhanced speed, safety, and reliability.

Current Market Trends

- ★ Today's market trends are shaped by a complex interplay of trade volumes, technological advancements, and regional economic shifts. The increase in global trade has led to a surge in demand for more advanced spreader systems. Regions with growing port activities are seeing higher adoption rates of automated spreaders, reflecting a move towards more efficient and sustainable operations.



Future Forecasts

- ★ The horizon for container spreaders is marked by technological innovation. Automation is set to become more prevalent, with intelligent systems that can adapt to various container sizes and weights. As trade dynamics evolve, so too will the demand for spreaders that can handle increased throughput with minimal environmental impact. The push for sustainability is expected to drive the next wave of spreader technology, focusing on energy efficiency and reduced emissions.

In conclusion, container spreaders are a linchpin in the logistics chain, facilitating the movement of goods across the world with precision and care. As we look ahead, it's clear that innovation will remain essential in meeting the ever-changing demands of global trade. KINO Spreaders is committed to leading this charge, engineering solutions that not only meet today's challenges but pave the way for a more efficient and sustainable tomorrow.



● Company Introduction

History and Location

Founded in 2019 and located in the renowned cradle of crane manufacturing, our company boasts a team brimming with experience and expertise in the lifting industry. Our lead designer, with a decade of experience at the prestigious Henan Kino Cranes co.ltd., brings a wealth of knowledge in container spreader design and development. Our design team has matured alongside China's advancements in container spreader manufacturing, contributing to the nation's growth in this field.

Design and Manufacturing

Our spreader products are meticulously designed to meet international standards, utilizing high-strength alloy steel for their main structural materials. Production and inspection processes are stringently carried out in accordance with precise design specifications and technological requirements. The electrical components and advanced operational control systems integrated into our equipment are sourced from renowned domestic and international brands, ensuring high quality, low failure rates, and reliable safety.

Service Range

While our primary focus is on standard container spreaders, we are also dedicated to the design, development, and manufacturing of custom spreaders tailored to unique requirements.

Global Reach and Partnerships

Our spreaders are in active operation across more than 50 ports in over 10 countries worldwide. From the east to west coasts of the United States, to numerous ports in Germany, France, Russia, Poland, the United Kingdom, Italy, and the Netherlands within Europe; from the busy docks of Peru, Chile, Brazil, and Venezuela in South America; to the shores of Kenya, Djibouti, Morocco in Africa; extending to Australia and New Zealand in Oceania; up north to Mexico and Canada; as well as across many Asian hubs in South Korea, India, Singapore, and Malaysia—KINO spreaders are a trusted presence, enhancing efficiency and productivity.

● Types of Container Spreaders

At KINO Spreader, we offer a comprehensive range of truck spreaders designed to cater to various aspects of container handling. Our products are engineered to enhance efficiency and safety in the demanding field of container logistics.

Truck Spreaders

Our versatile truck spreader lineup includes models for lift trucks, reach stackers for ISO container handling, and intermodal truck spreaders capable of managing swap bodies, trailers, and bottom lift containers. Each spreader is crafted with customization in mind, ensuring they meet your unique operational requirements.

Lift Trucks

Specifically designed for lift trucks, our spreaders can be fork-mounted, gantry-mounted, or integrated into the mast. They are adept at handling both empty and laden containers, with the ability to manage single or double containers for empty handling. Our spreaders are available in telescopic or fixed models, ranging from 20 to 40 feet, with a maximum lifting load of 9/10 tons for single/double empty handling and up to 45 tons for laden containers.

Reach Stackers

KINO spreaders for reach stackers are tailored for lifting ISO containers. Available for both laden and empty containers, these spreaders can be telescopic or fixed from 20 to 40 feet and support a maximum lifting load of 45 tons.

Intermodal Spreaders

The KINO intermodal spreader is a hybrid solution, accommodating regular ISO containers and B7 containers with its innovative folding legs. This design allows for handling swap bodies, trailers, and bottom lift containers as well. With a capacity of up to 45 tons and extendable from 20 to 40 feet, this spreader is a testament to our commitment to versatility and adaptability.

Crane Spreaders

Our crane spreader range encompasses four types suited for various container handling operations: Ship to shore, RTGs/RMGs, Mobile harbor cranes, and Intermodal. These spreaders are also customizable and offer capacities up to 45 tons with extensions from 20 up to 45 feet.

Ship to Shore: Designed for quayside cranes with the option of twin-lift capabilities.

RTGs/RMGs: Both hydraulic and electric options for rail-mounted or rubber-tyred gantry cranes.

Mobile Harbour Cranes: Tower-mounted with side flippers and center of gravity adjustment features.

Additionally, we provide spreaders specifically developed for straddle carriers in single or twin-lift modes.

Designed for Worldwide Container

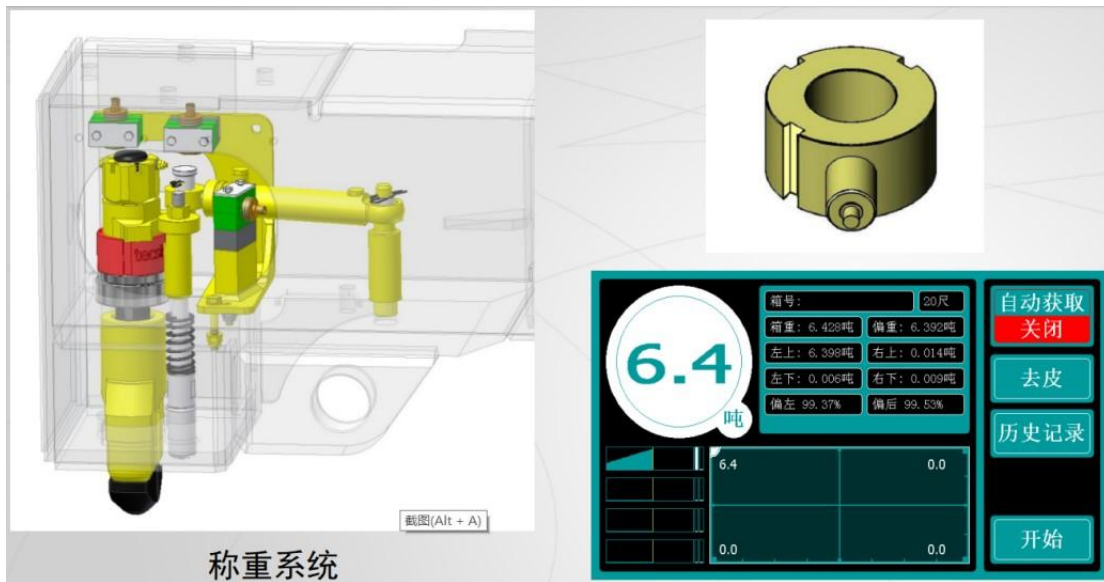
From our plant in China, we design, manufacture, and assemble our diverse range of truck spreaders, crane spreaders, and straddle carrier spreaders. We also supply various attachments, special equipment, and KINO Genuine Parts – our line of approved spare parts.





According to operational requirements, spreaders can be divided into various specifications and models. They are categorized by the size of the container they are intended to handle, including specific models such as 20ft fixed spreaders, 40ft fixed spreaders, 20ft/40ft telescopic spreaders, 20ft/40ft/45ft telescopic spreaders, and 2-20ft telescopic twin-container spreaders, among others. Based on the type of driving action, there are fully electric-driven spreaders and hydraulic-driven spreaders. With the growing emphasis on environmental awareness in society, hydraulic-driven spreaders are gradually being phased out in favor of fully electric-driven spreaders, which are becoming increasingly widespread.

Additionally, with optional auxiliary functions, there are rotating spreaders, translational spreaders for trolley movement direction, and translational spreaders for gantry movement direction. Due to the requirement of rail freight to maintain uniform container door positions, rail yard gantry cranes are generally equipped with rotating spreaders.



Accidents due to severe container load imbalance are frequent; therefore, international conventions on container safety (CSC) and Chinese railway departments have regulations for inspecting container load imbalance. Consequently, rail yard spreaders must be equipped with weighing systems or anti-load imbalance systems.



A spreader is mainly composed of the main beam structure, telescopic beam structure, end beam structure, telescopic drive mechanism, twistlock drive mechanism, and guide plate mechanism. The main structure of the spreader is a closed box girder form and is designed according to international standards. Depending on different operational requirements, translational mechanisms or rotating mechanisms can be added to the structure of the spreader, or mechanisms with both translational and rotating functions can be directly installed to meet usage requirements. These mechanisms are typically driven by reduction motors.





Due to the variety of host machines and different working conditions, the connection between the spreader and the crane host can vary. The upper part of the spreader has various connection structures to the host machine, including: 1) Independent upper frame equipment, where the bottom lifting points of the frame can be connected to the upper lifting points of the spreader through pins or bolts; the upper part can be connected to steel wire ropes through pulleys, shackles or rope sockets; 2) Devices such as pulleys, shackles or rope sockets installed on the upper part of the spreader structure for connection to steel wire ropes; 3) If the crane host is equipped with a hook, devices that can connect to the hook are installed on the upper part of the spreader.



The image on the right shows a single-point pin type that connects through a pin to the hook's pinhole, suitable for double hooks with pinholes.



An electrical system is installed on the spreader to control the execution of various actions and provide feedback on conditions. This system includes an electrical control box, limit switches, junction boxes, modules, indicator lights, plugs, various sensors, and signal transmission devices.

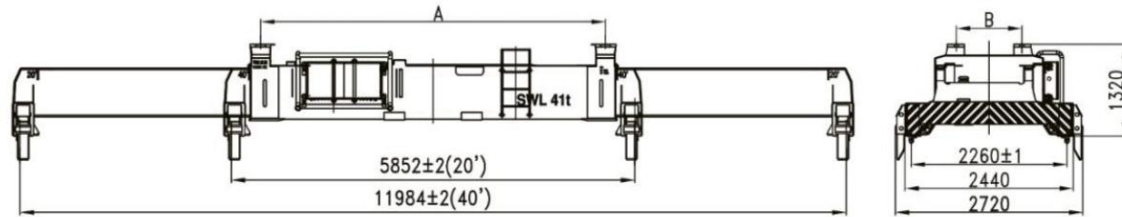


For maintenance, safety protection, and other requirements, spreaders may be optionally equipped with ladders, guardrails, anti-fall lugs, anti-detachment chains, and self-closing doors as needed.

Regular maintenance and repairs are essential for spreaders. Upon reaching certain usage periods, mandatory maintenance and replacement of key parts are required. Equipping necessary key spare parts is crucial, such as pins, sleeves, handles, limit switches etc. It's vital to follow the product maintenance manual for proper upkeep.

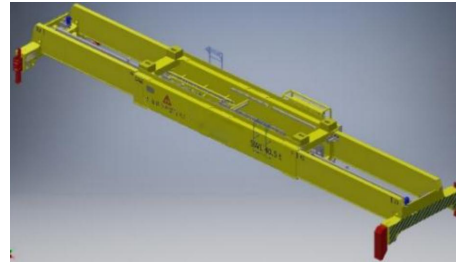
● Electric Single-lift Telescopic Spreader

Model: ESS40ft_FF4



Introduction

- 1.For operation with standard 20 feet and 40 feet containers
- 2.Retractable for 20 feet and 40 feet;
- 3.Can be equipped with electric movable box guide;
- 4.All actions are driven by a geared motor.

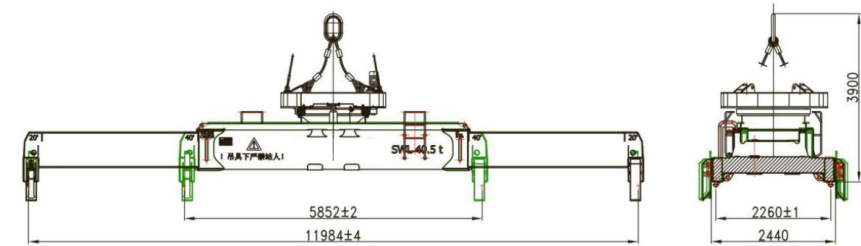


Technical Parameter

Model	ESS40ft_FF4
Self-weight	7.3tons
Application	RTG, RMG
Twistlock Mode	ISO floating twistlock, driven by geared motor
Telescopic Mode	Driven by electric motor connected to an endless chain
Flippers Device	Fixed knock-down flipper (FF, as agreed)
Power Votage/ Frequency	AC380(3P)/50Hz
Total Power	≤6KW
Allowable Load Eccentricity	±10%
Rated Load	≤41tons
Rated Load of Lifting Lugs	4×10.5tons
Ambient Temperature	-20°~+60°
Locking and Unlocking Time	~1s
Expansion Time (20ft~40ft)	~22s
Precaution Class	IP55
Control Voltage	AC220V(as agreed)
Maximum Power Consumption	4KW

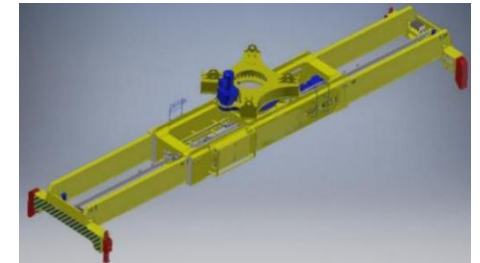
● Electric Single-lift Telescopic Rotating Spreader

Model:ESS40ft_RSH_ER360°_FF4



Introduction

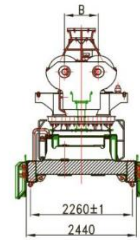
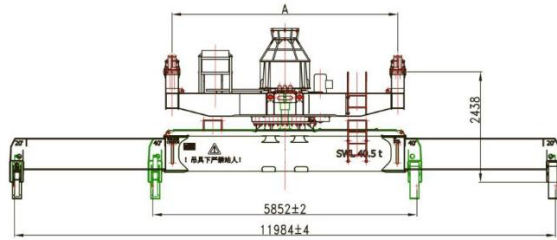
- 1.Retractable for 20 feet and 40 feet;
- 2.For operation with standard 20 feet and 40 feet containers;
- 3.Capable of 360° full rotation action;
- 4.All actions are driven by a geared motor.



Technical Parameter

Model	ESS40ft_RSH_ER360°_FF4
Self-weight	9.5tons
Application	RTG, RMG
Twistlock Mode	ISO floating twistlock, driven by geared motor
Telescopic Mode	Driven by electric motor connected to an endless chain
Rotation Angle	360°(as agreed)
Rotatory Mode	The rotating motor drives the slewing bearing, which in turn drives the rotation
Flippers Device	Fixed knock-down flipper (FF, as agreed)
Power Votage/ Frequency	AC 380(3P)/50Hz
Total Power	≤8KW
Rated Load	≤41tons
Rated Load of Lifting Lugs	4×10.5tons
Ambient Temperature	-20°~+60°
Locking and Unlocking Time	~1s
Expansion Time (20ft~40ft)	~22s
Rotational Speed	1r/min
Allowable Load Eccentricity	±10%
Precaution Class	IP55
Control Voltage	AC 220V(as agreed)
Maximum Power Consumption	4KW

● Electric Single-lift Telescopic Rotating Spreader Model: ESS40ft_RHH_ER360°_FF4

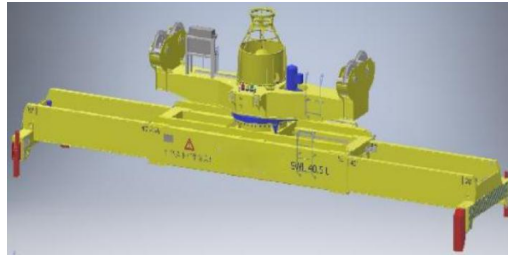


Introduction

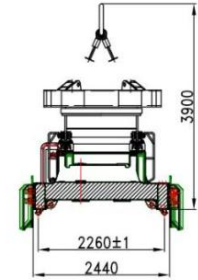
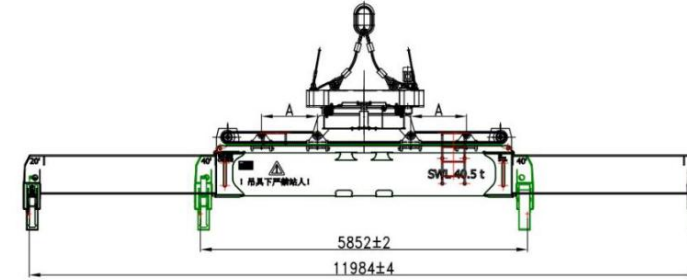
1. Retractable for 20 feet and 40 feet;
2. For operation with standard 20 feet and 40 feet containers;
3. Capable of 360° full rotation;
4. All actions are driven by geared motor.

Technical Parameter

Model	ESS40ft_RHH_ER360°_FF4
Self-weight	11.5tons
Application	RTG, RMG
Twistlock Mode	ISO floating twistlock, driven by geared motor
Telescopic Mode	Driven by electric motor connected to an endless chain
Rotation Angle	360°(as agreed)
Rotatory Mode	The rotating motor drives the slewing bearing, which in turn drives the rotation
Flippers Device	Fixed knock-down flipper (FF, as agreed)
Power Votage/ Frequency	AC 380(3P)/50Hz
Total Power	≤8KW
Allowable Load Eccentricity	±10%
Rated Load	≤41tons
Rated Load of Lifting Lugs	4×10.5tons
Ambient Temperature	-20°~+60°
Locking and Unlocking Time	~1s
Expansion Time (20ft~40ft)	~22s
Rotational Speed	1r/min
Precaution Class	IP55
Control Voltage	AC 220V(as agreed)
Maximum Power Consumption	4KW



● Electric Single-lift Telescopic Rotating Spreader Model:ESS40ft_RSH_ER360°_CT±1200_FF4

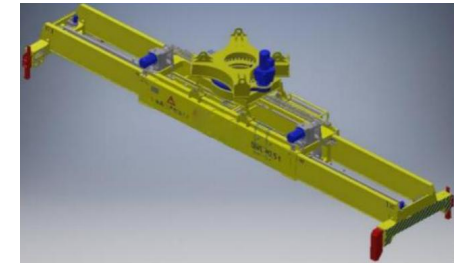


Introduction

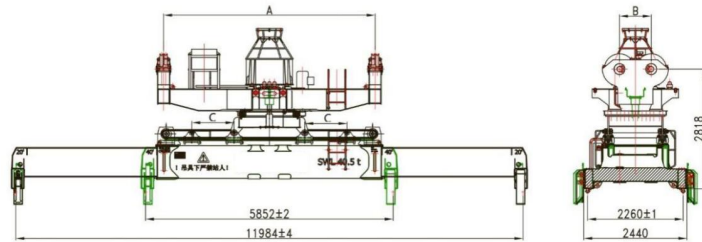
1. Retractable for 20 feet and 40 feet;
2. For operation with standard 20 feet and 40 feet containers;
3. Capable of 360° full rotation action;
4. Capable of horizontal movement;
5. All actions are driven by geared motor.

Technical Parameter

Model	ESS40ft_RSH_ER360°_CT±1200_FF4
Self-weight	11 tons
Application	RTG, RMG
Twistlock Mode	ISO floating twistlock, driven by geared motor
Telescopic Mode	Driven by electric motor connected to an endless chain
Rotation Angle	360°(as agreed)
Horizontally Moving Distance	±1200mm
Rotatory Mode	The rotary motor drives the slewing bearing to drive the rotation
Flippers Device	Fixed knock-down flipper (FF, as agreed)
Power Votage/ Frequency	AC 380(3P)/50Hz
Total Power	≤14KW
Allowable Load Eccentricity	±10%
Rated Load	≤41tons
Rated Load of Lifting Lugs	4×10.5tons
Ambient Temperature	-20°~+60°
Locking and Unlocking Time	~1s
Expansion Time (20ft~40ft)	~22s
Rotational Speed	1r/min
Horizontally Moving Time	~35s(as agreed)
Horizontally Moving Mode	Driven by electric motor connected to roller chain
Precaution Class	IP55
Control Voltage	AC 220V(as agreed)
Maximum Power Consumption	4KW

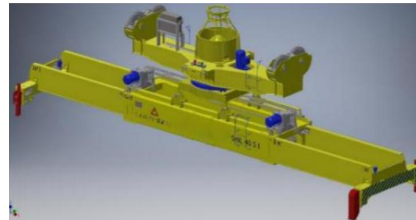


● **Electric Single-lift Telescopic Rotating Spreader Model:**
ESS40ft_RHH_ER360°_CT±1200_FF4



Introduction

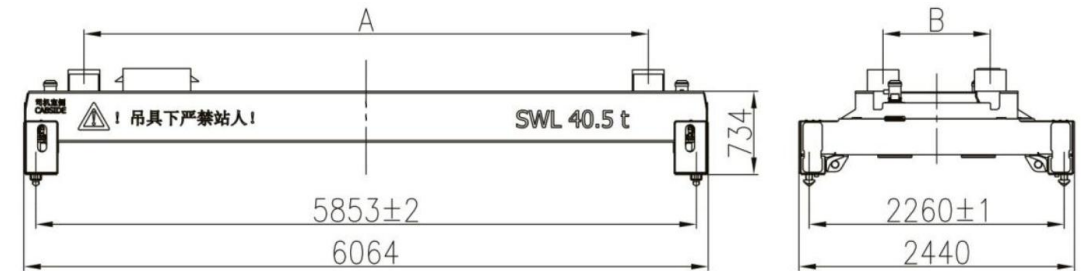
1. Retractable for 20 feet and 40 feet;
2. For operation with standard 20 feet and 40 feet containers;
3. Capable of 360° full rotation action;
4. Capable of horizontal movement;
5. All actions are driven by geared motor.



Technical Parameter

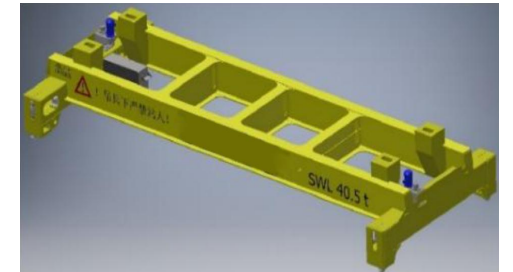
Model	ESS40ft_RHH_ER360°_CT±1200_FF4
Self-weight	13 tons
Application	RTG, RMG
Twistlock Mode	ISO floating twistlock, driven by geared motor
Telescopic Mode	Driven by electric motor connected to an endless chain
Rotation Angle	360°(as agreed)
Horizontally Moving Distance	±1200mm
Rotatory Mode	The rotating motor drives the slewing bearing, which in turn drives the rotation
Flippers Device	Fixed knock-down flipper (FF, as agreed)
Power Votage/ Frequency	AC 380(3P)/50Hz
Total Power	≤14KW
Allowable Load Eccentricity	±10%
Rated Load	≤41tons
Rated Load of Lifting Lugs	4×10.5tons
Ambient Temperature	-20°~+60°
Locking and Unlocking Time	~1s
Expansion Time (20ft~40ft)	~22s
Rotational Speed	1r/min
Horizontally Moving Time	~35s(as agreed)
Horizontally Moving Mode	Driven by electric motor connected to an endless chain
Precaution Class	IP55
Control Voltage	AC 220V(as agreed)
Maximum Power Consumption	4KW

● **Electric Single-lift Fixed Spreader Model:** **EFS20ft/EFS40ft**



Introduction

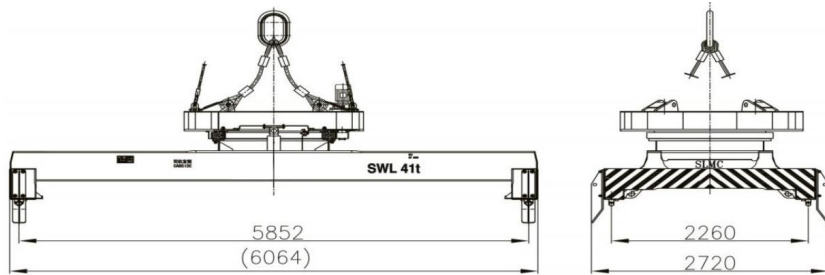
1. Available in two sizes, 20 feet and 40 feet;
2. For operation with standard 20 feet and 40 feet containers;
3. All actions are driven by geared motor;
4. The upper plane of the spreader is connected with the shelf.



Technical Parameter

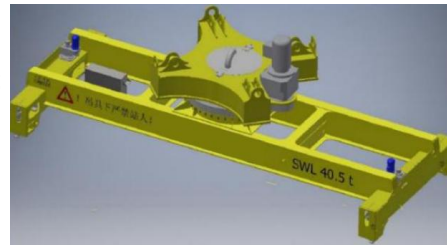
Model	EFS20ft/EFS40ft
Self-weight	2.5tons/5tons
Application	RTG, RMG
Twistlock Mode	ISO floating twistlock, driven by geared motor
Flippers Device	Fixed knock-down flipper (FF, as agreed)
Power Votage/ Frequency	AC 380(3P)/50Hz
Total Power	≤1.1KW
Allowable Load Eccentricity	±10%
Rated Load	≤41tons
Rated Load of Lifting Lugs	4×10.5tons
Ambient Temperature	-20°~+60°
Locking and Unlocking Time	~1s
Precaution Class	IP55
Control Voltage	AC 220V(as agreed)
Maximum Power Consumption	1.1KW

● Electric Single-lift Fixed Rotating Spreader Model: EFS20ft_RSH_ER360°_FF4/EFS40ft_RSH_ER360°_FF4



Introduction

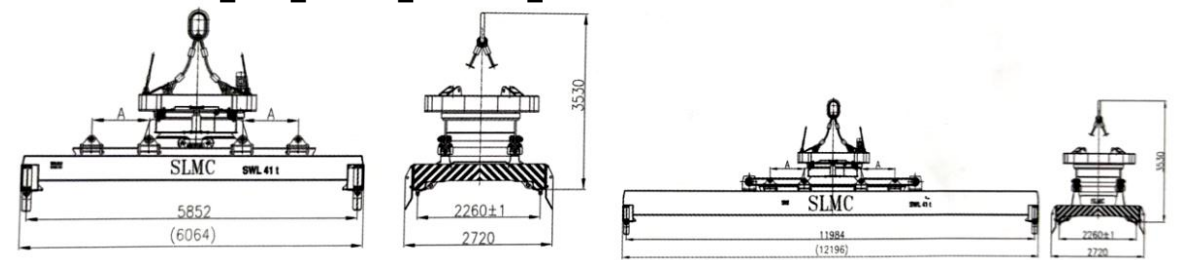
1. For operation with standard 20 feet and 40 feet containers;
2. Available in two sizes, 20 feet and 40 feet;
3. Capable of 360° full rotation action;
4. All actions are driven by geared motor.



Technical Parameter

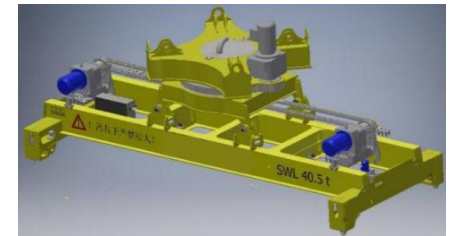
Model	EFS20ft_RSH_ER360°_FF4/EFS40ft_RSH_ER360°_FF4
Self-weight	5tons/6.3tons
Application	RTG, RMG
Twistlock Mode	ISO floating twistlock, driven by geared motor
Rotation Angle	360°(as agreed)
Rotatory Mode	The rotating motor drives the slewing bearing, which in turn drives the rotation
Flippers Device	Fixed knock-down flipper (FF, as agreed)
Power Votage/ Frequency	AC 380(3P)/50Hz
Total Power	≤4.1KW
Rated Load	≤41tons
Rated Load of Lifting Lugs	4×10.5tons
Ambient Temperature	-20°~+60°
Locking and Unlocking Time	~1s
Rotational Speed	1r/min
Allowable Load Eccentricity	±10%
Precaution Class	IP55
Control Voltage	AC 220V(as agreed)
Maximum Power Consumption	3KW

● Electric Single-lift Fixed Rotating Translation Spreader Model: EFS20ft_RSH_ER360°_CT±1200_FF4



Introduction

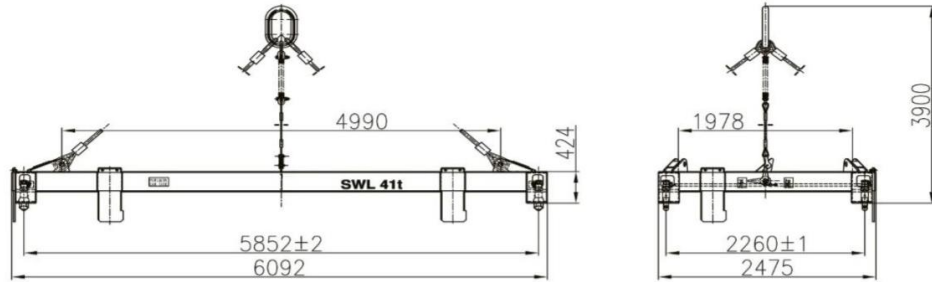
1. For operation with standard 20 feet and 40 feet containers;
2. Available in two sizes, 20 feet and 40 feet;
3. Capable of 360° full rotation action;
4. Can move around plus or minus 1200 mm;
5. All actions are driven by geared motor.



Technical Parameter

Model	EFS20ft_RSH_ER360°_CT±1200_FF4
Self-weight	7.5 tons/9 tons
Application	RTG, RMG
Twistlock Mode	ISO floating twistlock, driven by geared motor
Rotation Angle	360°(as agreed)
Horizontally Moving Distance	±1200mm
Rotatory Mode	The rotating motor drives the slewing bearing, which in turn drives the rotation
Flippers Device	Fixed knock-down flipper (FF, as agreed)
Power Votage/ Frequency	AC380(3P)/50Hz
Total Power	≤8KW
Allowable Load Eccentricity	±10%
Rated Load	≤41tons
Rated Load of Lifting Lugs	4×10.5tons
Ambient Temperature	-20°~+60°
Locking and Unlocking Time	~1s
Rotational Speed	1r/min
Side Shift Time	~35s
Horizontally Moving Mode	Driven by electric motor connected to an endless chain
Precaution Class	IP55
Control Voltage	AC220V(as agreed)
Maximum Power Consumption	4KW

● Semi-automatic Single-lift Fixed Spreader Model: AFS20ft SF/AFS40ft SF



Introduction

- 1.For operation with standard 20 feet and 40 feet containers;
- 2.Available in two sizes, 20 feet and 40 feet;
- 3.Install simple single board fixed flipper;
- 4.No power drive, mechanical automatic drive.

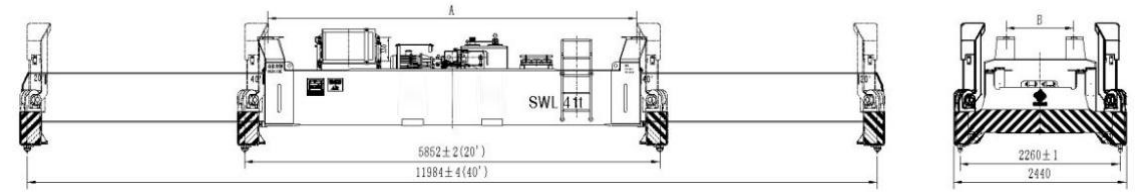
Technical Parameter

Model	AFS20ft_SF/AFS40ft_SF
Self-weight	2.5tons/5tons
Application	RTG, RMG
Twistlock Mode	ISO floatingtwistlock, driven by an automatic spring
Flippers Device	Simplefixedflipper (SF, as agreed)
Rated Load	≤41tons
Ambient Temperature	-20°~+60°
Constructure Mode	Frame construction
Spring Stroke	100mm
Allowable Load Eccentricity	±10%



● Hydraulic Single-lift Telescopic Spreader

Model: HSS40ft_HF4



Introduction

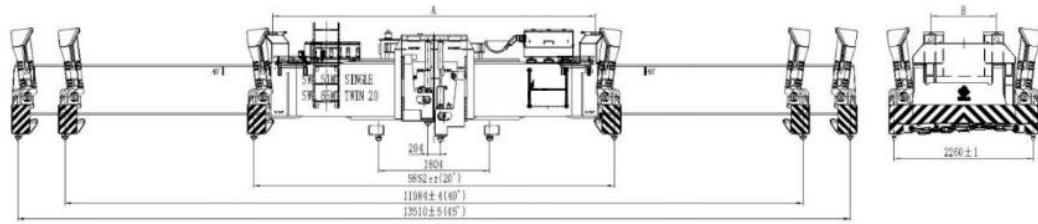
- 1.For operation with standard 20 feet and 40 feet containers;
- 2.Retractable for 20 feet and 40 feet;
- 3.The spreader can be equipped with hydraulic movable flipper to guide the box;
- 4.All actions are driven by hydraulic motor.



Technical Parameter

Model	HSS40ft_HF4
Self-weight	8.5tons
Application	RTG, RMG, Overhead crane
Twistlock Mode	ISO floatingtwistlock, driven by hydraulic oil cylinder
Telescopic Mode	Driven by an oil motor and retractable by a chain
Flippers Device	Swingcylindermovableflipper
Power Votage/ Frequency	AC380(3P)/50Hz
Total Power	≤7.5KW
Allowable Load Eccentricity	±10%
Rated Load	≤41tons
Rated Load of Lifting Lugs	4×10.5tons
Ambient Temperature	-20°~+60°
Locking and Unlocking Time	~1s
Expansion Time (20ft~40ft)	~30s
Flipper through180°	5~7s
Control Voltage	AC220V(as agreed)
Operation Pressure of the System	100bar
Precaution Class	IP55

● Hydraulic Movable Twin-lift Spreader Model: HMT2-20ft/45ft_HF4



Introduction

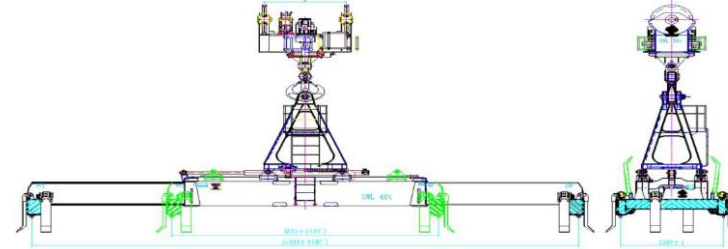
- 1.For operation with two 20 feet, 40 feet and 45 feet standard containers;
- 2.Telescopic action and two lift separation at 20 feet, 40 feet and 45 feet are available;
- 3.The spreader can be equipped with hydraulic movable flipper to guide the box;
- 4.All actions are driven by hydraulic motor.



Technical Parameter

Model	HMT2-20ft/45ft_HF4
Self-weight	13.5tons
Application	RTG, RMG, Overhead crane
Twistlock Mode	ISO floatingtwistlock, driven by hydraulic oil cylinder
Telescopic Mode	Driven by an oil motor and retractable by a chain
Middle lifting point	Raised and lowered by vertical movement of hydraulic cylinders
Twin-liftMovingMode	Moved by horizontal movement of hydraulic cylinder
Flippers Device	Swingcylindermovableflipper
Power Votage/ Frequency	AC380(3P)/50Hz
Total Power	≤7.5KW
Allowable Load Eccentricity	±10%
Rated Load	Single-lift50tons Twin-lift 65tons
Rated Load of Lifting Lugs	4×12.5tons
Ambient Temperature	-20°~+60°
Locking and Unlocking Time	~1s
Expansion Time (20ft~40ft)	~35s
Single Stroke Time	~10s
0~1.6mSingle Stroke Time	~25s
Flipper through 180°	5~7s
Control Voltage	AC220V(as agreed)
Operation Pressure of the System	100/170bar
Precaution Class	IP55

● Split Hydraulic Single-lift Rotating Spreader Model: HSS40ft_PRH_FR360°_CT±1200_HF6



Introduction

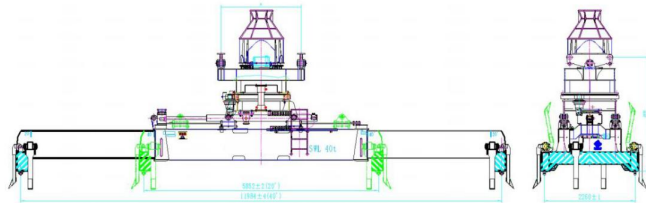
- 1.For operation with standard 20 feet and 40 feet containers;
- 2.Capable of 360° full rotation action;
- 3.The maximum left and right translation distance in the direction of the ca
- 4.The rotary hook is driven by motor and can be used separately after disassembling the spreader.
- 5.All actions are driven by hydraulic motor.



Technical Parameter

Model	HSS40ft_PRH_FR360°_CT±1200_HF6
Self-weight	13tons
Application	Portal crane
Twistlock Mode	ISO floating twistlock, driven by hydraulic oil cylinder
Telescopic Mode	Driven by an oil motor and retractable by a chain
Rotatory Mode	The motor drives the rotary hook, which in turn drives the rotation
Rotation Angle	360°(as agreed)
Horizontally Moving Distance	±1200mm
Flippers Device	Swingcylindermovableflipper
Power Votage/ Frequency	AC380(3P)/50Hz
Total Power	≤13.5KW
Allowable Load Eccentricity	±10%
Rated Load	≤41tons
Rated Load of Lifting Lugs	4×10.5tons
Ambient Temperature	-20°~+60°
Locking and Unlocking Time	~1s
Expansion Time (20ft~40ft)	~30s
Horizontally Moving Mode	Driven by hydraulic oil cylinder
Rotational Speed	1r/min
Side Shift Time	~35s
Flipper through 180°	5~7s
Control Voltage	AC220V(as agreed)
Operation Pressure of the System	100bar
Precaution Class	IP55

● Integral Hydraulic Single-lift Rotating Spreader Model: HSS40ft_RSH_ER360°_CT±1200_HF6



Introduction

- 1.For operation with standard 20 feet and 40 feet containers;
- 2.Capable of 360° full rotation action;
- 3.The maximum left and right translation distance in the direction of the cart is ± 1200 mm;
- 4.All actions are driven by hydraulic motor

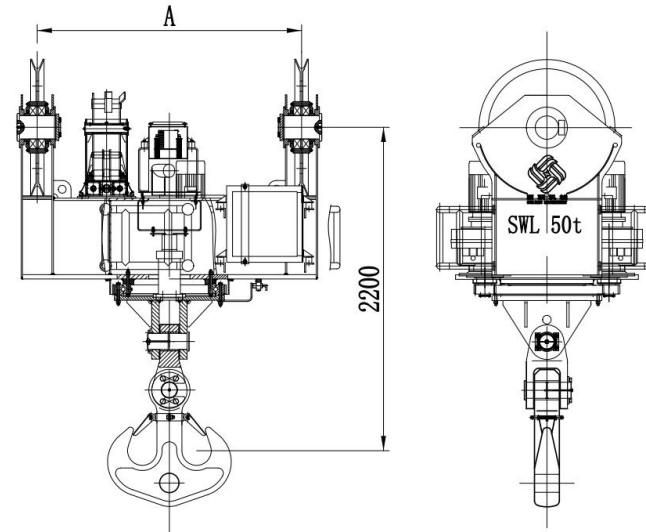
Technical Parameter

Model	HSS40ft_RSH_ER360°_CT±1200_HF6
Self-weight	13tons
Application	RTG, RMG
Twistlock Mode	ISO floatingtwistlock, driven by hydraulic oil cylinder
Telescopic Mode	Driven by an oil motor and retractable by a chain
Rotatory Mode	The motor drives the rotary hook, which in turn drives the rotation
RangeofRotation Angles	360°(as agreed)
Horizontally Moving Distance	± 1200 mm
Flippers Device	Swingcylindermovableflipper
Power Votage/ Frequency	AC380(3P)/50Hz
Total Power	≤ 7.5 KW
Allowable Load Eccentricity	$\pm 10\%$
Rated Load	≤ 41 tons
Rated Load of Lifting Lugs	4×10.5 tons
Ambient Temperature	$-20^{\circ} \sim +60^{\circ}$
Locking and Unlocking Time	~ 1 s
Expansion Time (20ft~40ft)	~ 30 s
Horizontally Moving Mode	Driven by hydraulic oil cylinder
Rotational Speed	1r/min
SideShift Time	~ 35 s
Flipper through 180°	5~7s
Control Voltage	AC220V(as agreed)
Operation Pressure of the System	100bar
Precaution Class	IP55



● Electric Rotating Hook

Model: RPH_FR360°



Introduction

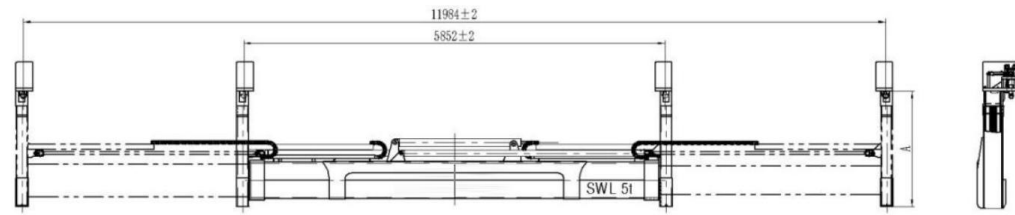
- 1.For operation with bulk cargo;
- 2.Capable of 360° full rotation action;
- 3.The rotation action on the hook is completed by the motor rotation.

Technical Parameter

Model	RPH_FR360°
Self-weight	2.5tons
Application	Portalcrane, Jibcrane
Rotatory Mode	Driven by motor and geared
Power Votage/ Frequency	AC380(3P)/50Hz
Rated Load	≤ 50 tons
Total Power	≤ 4 KW
Ambient Temperature	$-20^{\circ} \sim +60^{\circ}$
Rotation 360°	1r/min
Control Voltage	AC220V(as agreed)



● Container Handler Spreader Model: HLS40ft



Introduction

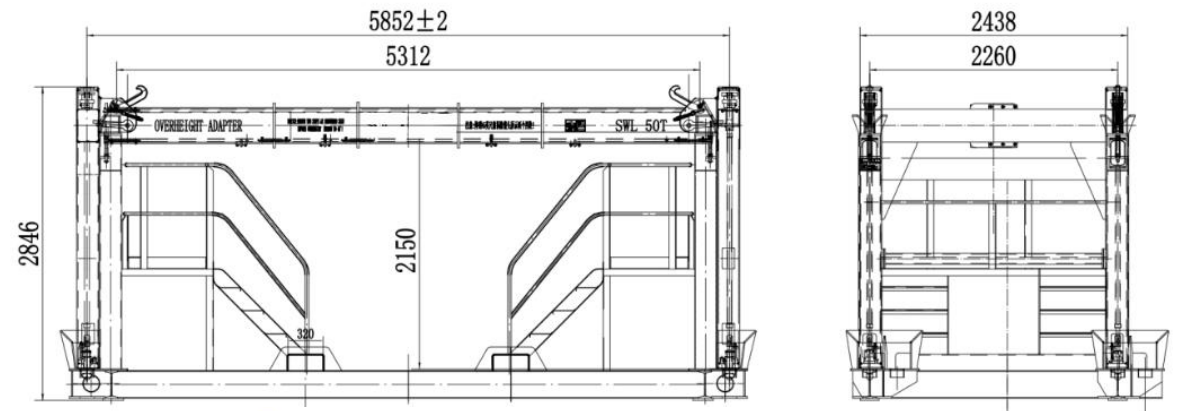
- 1.For operation with standard 20 feet and 40 feet empty containers;
- 2.RetRACTable for 20 feet and 40 feet;
- 3.Capable of about 600mm side shift;
- 4.All actions are driven by hydraulic motor.

Technical Parameter

Model	HLS40ft
Self-weight	3.5tons
Application	ContainerHandler
Twistlock Mode	ISO floatingtwistlock, driven by hydraulic oil cylinder
Telescopic Mode	Driven by hydraulic oilcylinder expansion
Side Shift Device	Driven by hydraulic oilcylinder expansion
Power Votage/ Frequency	AC380(3P)/50Hz
Allowable Load Eccentricity	±10%
Rated Load	≤8tons
Twistlock Housing Vertical Floating Stroke	200mm
Ambient Temperature	-20°~+60°
Locking and Unlocking Time	~1s
Expansion Time (20ft~40ft)	~25s
Side Shift ±600	~15s
Control Voltage	AC220V(as agreed)
Precaution Class	IP55



● Overheight Frame Spreader Model: AOS45ft



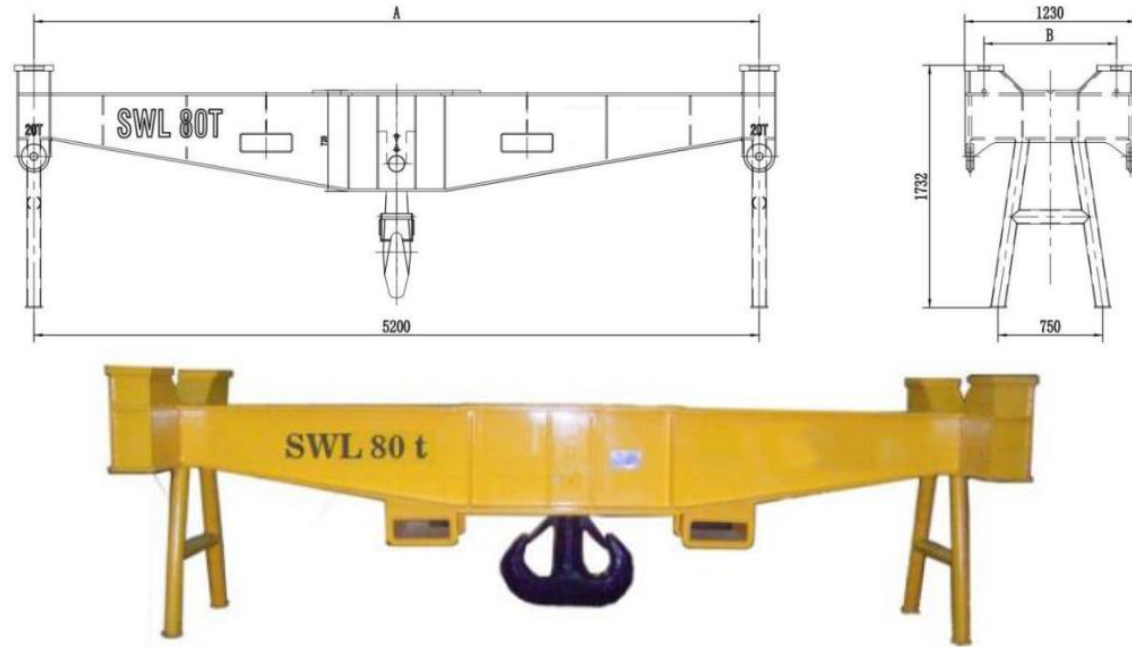
Introduction

- 1.For operation with 20 feet, 40 feet and 45 feet high container without top;
- 2.RetRACTable for 20 feet, 40 feet and 45 feet;
- 3.It is used with standard container telescopic spreader.

Technical Parameter

Model	AOS45ft
Self-weight	Hanger 2.1tons Base2.5tons
Application	SC, QC
Rated Load	≤50tons
DrivingMode	Driven by spreader
Ambient Temperature	-20°~+60°

● Mechanical Cargo Beam Model: MHB80



Introduction

- 1.For operation with bulk cargo;
- 2.Connect the host with spreader or shelf;
- 3.Connect by twistlock or latch.

Technical Parameter

Model	MHB80
Self-weight	2.7tons
Host Connection Mode	Connect to spreader or shelf by means of a twistlock hole or latch
Ambient Temperature	-20°~+60°
Rated Load	50-80tons
Application	RTG, RMG
HookMode	Manual selectable

● Mechanical Spare Parts



Twistlock Assembly



Electric Spreader End Twistlock Mechanism



Twistlock



Twistlock Sheath



Thrust Spherical Plain



Turn Handle



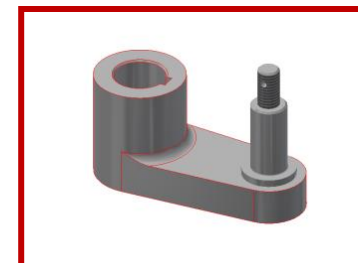
Twistlock Nut



Ejector Pin



Ejector Spring



Swivel Arm



Motor Shaft

● Mechanical Spare Parts



Telescopic Drive Mechanism of Hydraulic Single-lift Spreader



Telescopic Drive Mechanism of Electric Single-lift Spreader



Telescopic Roller Chain



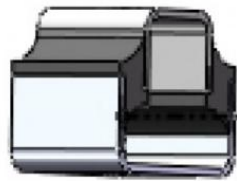
U-shaped Joint



Fitted Key



Locating Sleeve



Buffer



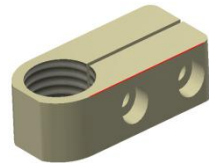
Viberating Roller Pad



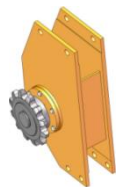
Cushyfloat Mounting



Fixture Keys



Clamping Block

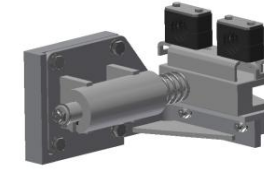


Driven Sprocket Carrier Assembly

● Mechanical Spare Parts



Take-ups



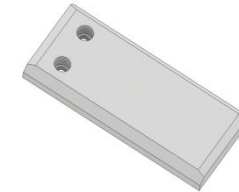
Telescopic Positioning Device



Sprocket



Tipper Pad



Anti-friction Block



Towline



Lock Motor



Telescopic Motor



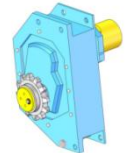
Electric Flipper



Ejector Spring



Swivel Arm



Motor Shaft

● Electricity Spare Parts



Limit



ASI Module



CAN Module



CAN Controller



Ultrasonic Limiter



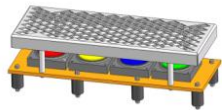
Power-off Switch



Receptacle Plug/Socket



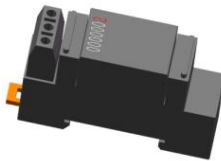
Electric Component



Indicator



Timer



Counter



AC/DC Converter



Transformer



Emergency Stop Switch



Rotary Encoder



Mechanical Limit

● Hydraulic Spare Parts



Flipper Swing Cylinder



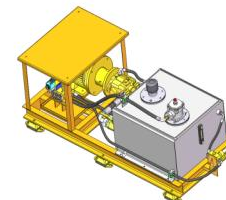
Hydraulic Cylinder



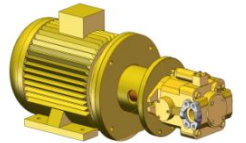
Oil Pump



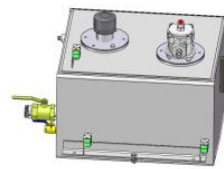
Oil Motor



Power Station



Motor Set of Hydraulic pump



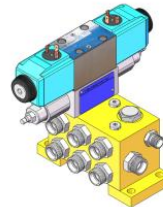
Oil Tank



Power Station Coupling



Hand Pump



Hydraulic Valve Block



Power Station Accessories



Oil Pipes and Joints

• FAQ Section

Introduction:

"Find quick answers to frequently asked questions about KINO Spreaders. If your question isn't covered here, please use our Customer Inquiry Form to get in touch."

How do I choose the right spreader for my operations?

"Selecting the appropriate spreader depends on several factors such as container type, load capacity, and the specific requirements of your operation. Our sales team can help you assess your needs and recommend the most suitable product."

What maintenance is required for KINO Spreaders?

"Regular maintenance schedules are provided with each product. We also offer maintenance services and guidance to ensure your spreader remains in optimal condition."

Service RCan I customize a spreader for non-standard container sizes?

"Yes, we specialize in customizing spreaders for various container types and sizes. Please contact us with your specifications for a tailored solution."

What should I do if my spreader is not functioning properly?

"Please refer to the troubleshooting guide in the user manual. If the issue persists, contact our customer support team for assistance."

How can I order spare parts for my spreader?

"Spare parts can be ordered directly through us. Contact our parts department with your model number and the required parts, and we will process your order promptly."

"Have more questions? We're here to help. Fill out our Customer Inquiry Form, and we'll provide you with all the information you need."

Customer Inquiry Form

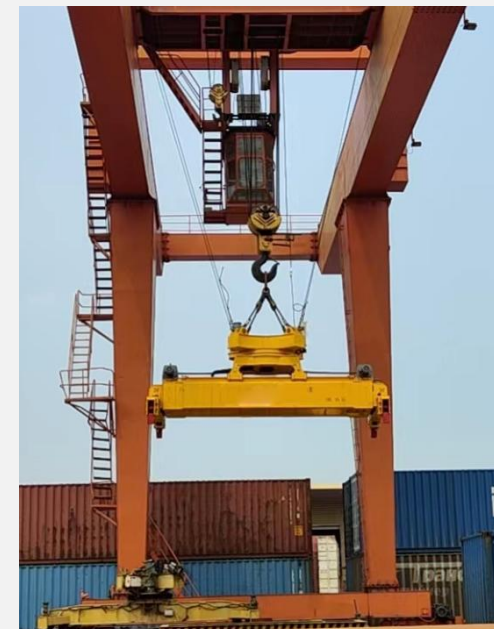
We value your inquiries and are here to assist you with any questions you may have about KINO Spreaders. Please fill out the form below, and a member of our team will get back to you promptly.

Section 1: Personal Information

Name: _____
 Email Address: _____
 Phone Number (Optional): _____
 Company/Organization: _____

Section 2: Inquiry Details

Subject of Inquiry: _____
 Product Model/Service (if applicable): _____
 Description of Inquiry: _____



"Thank you for reaching out to us. We aim to respond to all inquiries within 24-48 hours. If you require immediate assistance, please call our customer support hotline at +86 19037303916."